

MASTERYS™

No-break power solutions from 8 to 90 kVA

FOR CRITICAL INDUSTRIAL AND COMPUTER APPLICATIONS

MAKE YOUR BUSINESS SAFE



The solution you've been waiting for

Application procedures are becoming increasingly sophisticated due to the evolution of industrial and computer equipment and this inevitably generates difficult management situations.

How much dialogue are you missing?

All modern applications require solutions that interact with the user and prevent operational criticality.



MASTE 015 A

▶ The solution that **communicates with you**

MASTERYS has been designed to be an active partner that watches over your business and warns you in the event of failures or malfunctions. Communication is possible through the integrated LAN connection and by means of the wide range of monitoring and control software, through which *MASTERYS* communicates with the network manager and the Service Centre too.

How much does energy cost you?

Energy is a precious resource in a company: its management requires care and attention in order to reduce waste and costs.



MASTE 016 A

▶ The solution that **saves you money**

MASTERYS guarantees perfect sinusoidal absorption in all conditions. The six pack IGBT rectifier (THDI value <3% with P.F. >0.99) allows savings of up to 20% on power (kVA) consumed during normal operation, while ALWAYS-ON MODE offers the same guarantee during operation powered by the stand-by network.

How important is your future?

Growing awareness and sensitivity to environmental problems have led to the definition of production standards that are in harmony with the environment.



MASTE 014 A

▶ The solution that **respects the environment**

MASTERYS has been designed with a reduced number of components which are over 70% recyclable, once more time demonstrating SOCOMEC SICON UPS sensibility to the environment. Additionally, its high quality output and the reduction in harmonics translate into a consistent reduction in energy consumption.

A detail that guarantees your future.



MASTE 010 A

MASTERYS™

MAKE YOUR BUSINESS SAFE

No-break power solutions from 8 to 90 kVA
for critical industrial and computer applications



MASTE 008 A

> Business Critical

> Mission Critical

> e-Business

> Industrial Processes



MASTERYS BC is the ideal protection for medium-sized businesses: your company is kept safe with the same advanced technology as all the range.

▶ see page 4

MASTERYS MC easily adapts to the protection of those critical applications which would compromise the entire operability of the company if they were not working.

▶ see page 6

MASTERYS EB is the solution for your evolving business: power continuity guaranteed by a scalable and modular NO SINGLE POINT OF FAILURE system.

▶ see page 8

MASTERYS IP represents a total protection for your industrial processes. A compact solution that also integrates the isolation transformer and batteries in a single cabinet.

▶ see page 10

SOCOME SICON UPS has always been the first when it comes to innovation. First to introduce IGBT in our UPS and to use it up to 800 kVA. First to use DSP processors. First to come up with modular parallel systems and the concept of migration from Stand Alone to

System. And now first again with absolute innovations in **MASTERYS**: ENERGY SAVER, ALWAYS-ON MODE, GSS, EBS, integrated LAN connection. We are sure that these solutions will be copied tomorrow as already happened yesterday with IGBT and DSP.

Why wait? **MASTERYS** is here today!

ENERGY SAVER

ENERGY SAVER is now available in all configurations with more than two units in parallel.

In this mode only the UPS units needed to power the load at a given time are in operation.

Redundancy of operation is nevertheless ensured, by increasing the output level of the entire system. If the load's absorption demand increases, the units needed for the greater supply cut in with zero response time.

This logic responds fully to all applications with frequent breaks in load absorption continuity, maintaining in any case a high output for the entire system.

EXPERT BATTERY SYSTEM (EBS)

With the EBS system, using any type of battery in any condition is no longer just a dream.

Our latest UPS have been designed to operate with the type of battery that is most convenient for you (Valve regulated or vented lead acid batteries - VRLA, Open Vented, Nickel-Cadmium).

The EBS interacts directly and autonomously with the batteries to analyse the conditions of use and environmental conditions (such as temperature) and to establish each time the most appropriate recharging method (floating or intermittent). Optimal battery management is thus assured, corrosion phenomena reduced and lifetime is longer (up to 50%). Furthermore, EBS allows battery parameters and measurements monitoring on the front graphic display and via the LAN connection.



GLOBAL SUPPLY SYSTEM (GSS)

The customary attention paid by SOCOME SICON UPS to actual market needs has led to the Global Supply System: a tested and certified solution that guarantees perfect compatibility between UPS and Generator.

This solution, made possible by the IGBT rectifier, eliminates costly overrating of installations and, with the proprietary firmware allows integrated management of the UPS and the Generator. These provide a single system that is easy for users to manage and monitor.

ALWAYS-ON MODE

This innovative operating mode, specifically designed for this range, represents a significant evolution in the application possibilities of Uninterruptible Power Supplies.

In the Always-On Mode of operation, the load is powered by the stand-by mains but the harmonic rejections that are usually caused by distorting loads are monitored and corrected by the UPS. The inverter automatically guarantees the input sine wave, ensuring the quality of the mains and thus contributing to savings in the company's energy costs.



MASTE 001 A

This model offers an excellent ratio between size, power supplied and back-up times provided, making it ideal for operation in situations requiring specific attention to the protection of the business. It is suitable for medium sized businesses and for professional applications in general, and is particularly suitable for protection in IT environments due to the flexibility of back-up time and its ability to be mounted in 19" rack cabinets.

MAIN FEATURES

- Easy to install
- Mounted on wheels for ease of handling
- Unique on the market for its extremely compact size
- Can even be installed in 19" rack cabinets already in use at the user's premises
- Flexible back-up times: different back-up time configurations are available either within the UPS standard cabinet or by using taller UPS cabinets, where only the height increases, floor space remaining exactly as before (WxD = 444x795 mm)
- Up to 2 units can be placed in parallel: scalability in power or High Availability using redundancy
- Combi Concept: the MAS-BC108 and MAS-BC110 models accept either single-phase or three-phase input, selected at installation time
- Comes with alphanumeric LCD display
- Hot swap batteries
- Expert Battery System
- Backfeed protection (internal or external)
- Separate back-up mains for 3/1 models

PRODUCT CONFIGURATIONS

Model	Input / output	KVA	Back-up time std
MAS-BC 108	1/1 or 3/1*	8	16'
MAS-BC 110	1/1 or 3/1*	10	12'
MAS-BC 310	3/3	10	12'
MAS-BC 112	3/1	12	12'
MAS-BC 312	3/3	12	12'

Back-up time at 75% of the load

**Combi: accepts both single and three phase input*



MASTE 008 A



MASTE 003 A

The versatility and integrity of this version makes it the cornerstone of the whole **MASTERYS** range. It has been designed to protect the most strategic and sensitive IT loads and production processes.

The embedded LAN connection makes it a highly interactive product, capable of interacting fully with users and contributing to the prevention of system failures.

The IGBT rectifier is of course an essential component, making it possible not only to drastically cut electric pollution in respect of the mains but also enabling perfect interaction with generators, without having to overrate the system.

PRODUCT CONFIGURATIONS

Model	Input / output	KVA	Back-up time std
MAS-MC 115	3/1	15	11'
MAS-MC 315	3/3	15	11'
MAS-MC 120	3/1	20	10'
MAS-MC 320	3/3	20	10'
MAS-MC 330	3/3	30	10'
MAS-MC 340	3/3	40	10'
MAS-MC 360	3/3	60	12'*
MAS-MC 380	3/3	80	8'*

Back-up time at 75% of the load.
*using an external battery cabinet type W

MAIN FEATURES

- Mounted on wheels for ease of handling
- Unique on the market for its extremely compact size
- Can even be installed in 19" rack cabinets already in use at the user's premises (rack kit available up to 30 kVA)
- Flexible back-up times: different back-up time configurations are available either within the UPS standard cabinet or by using taller UPS cabinets, where only the height increases, floor space remaining exactly as before (WxD = 444x795 mm)
- Up to 6 units can be placed in parallel: scalability in power or High Availability using redundancy
- IGBT rectifier reducing harmonic distortion to a value of less than 3%
- Intelligent: embedded LAN connection for improved UPS supervision
- Advanced graphics display for total system control
- Redundant batteries: the battery packs are connected to each other in two distinct strings. If one battery in a string is not functioning, it does not compromise the back-up time provided by all the batteries belonging to the other string.
- Expert Battery System
- Always-On Mode
- Global Supply System
- Energy Saver
- Backfeed protection (internal or external)
- Separate back-up mains for 3/1 models
- Internal manual by-pass



MASTE 000 A



MASTE 006 A

MASTERYS EB is the top-of-the-range system, satisfying the most demanding expectations. It is yet another confirmation of SOCOMEC SICON UPS's technological supremacy.

A flexible and modular NO SINGLE POINT OF FAILURE system which, since all its components are redundant (power unit, controller, batteries, battery charger, etc.), is able to guarantee unequalled availability of power supply for the most powerful and sensitive IT applications: data processing centres, ISPs, ASPs, Server Farms and other major IT applications.

The concept of vertical modularity, which has already been applied by SOCOMEC SICON UPS very successfully, represents security of investment for users. The increasing need for protection is adequately satisfied by the scalability of the number of UPS modules, while the initial investment is safeguarded.

PRODUCT CONFIGURATIONS

Model	Input / output	KVA	Redundancy	Back-up time std
MAS-EB 330	3/3	30 (2x15)	N+1	11'
MAS-EB 345	3/3	45 (3x15)	N+1 / N+2	11**
MAS-EB 360	3/3	60 (2x30)	N+1	4'
MAS-EB 390	3/3	90 (3x30)	N+1 / N+2	4**

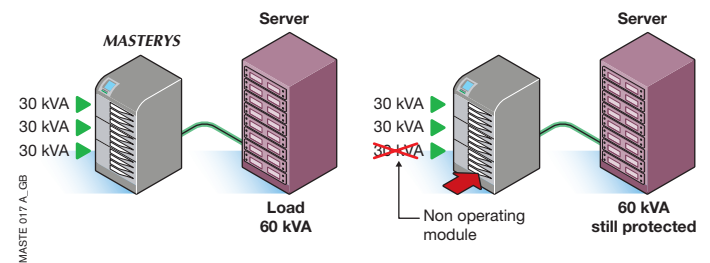
Back-up time at 75% of the load.

*using an external battery cabinet type W

MAIN FEATURES

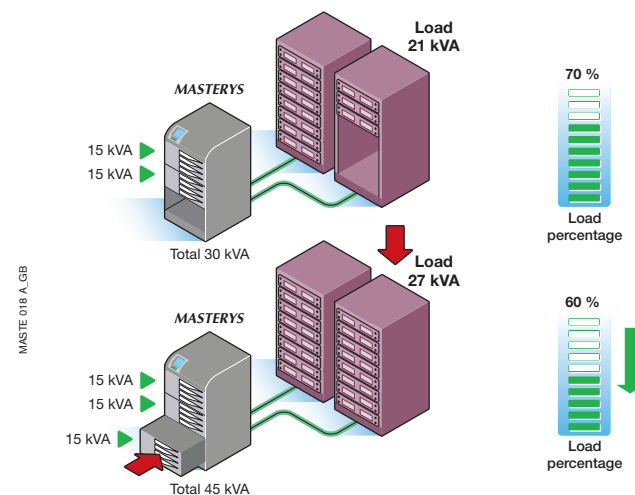
- Mounted on wheels for ease of handling
- Redundancy of all the main components to guarantee maximum operating reliability
- Power modules can be removed and replaced on site
- IGBT rectifier able to reduce harmonic distortion to a value of less than 3%
- Intelligent: embedded LAN connection for improved UPS supervision
- Advanced graphics display for total system control
- Redundant batteries: the battery packs are connected to each other in two distinct strings. If one battery in a string is not functioning, it does not compromise the back-up time provided by all the batteries belonging to the other string.
- Expert Battery System
- Always-On Mode
- Global Supply System
- Energy Saver
- Backfeed protection (internal or external)
- Internal manual by-pass

REDUNDANCY



MASTE 017 A, GB

SCALABILITY



MASTE 018 A, GB



MASTE 007 A

This model is characterised by its isolation transformer, which makes it ideal for all those industrial processes requiring a high level of safety and protection. Undoubtedly, the most compact product of its type, with galvanic transformer and batteries housed in the same cabinet as the UPS and still occupying very little floor space. Moreover, the metal cabinet and the high degree of protection (IP 21 standard, can be increased) guarantee performance better than anything previously used even in the industrial environments most at risk.

PRODUCT CONFIGURATIONS

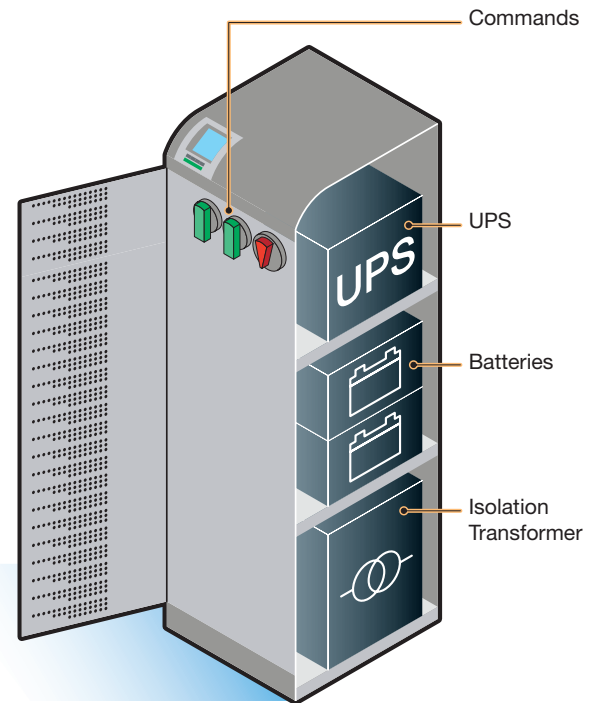
Model	Input / output	KVA	Back-up time std
MAS-IP 115	3/1	15	11'
MAS-IP 315	3/3	15	11'
MAS-IP 120	3/1	20	6'
MAS-IP 320	3/3	20	6'
MAS-IP 330	3/3	30	4'

Back-up time at 75% of the load.

MAIN FEATURES

- Mounted on wheels for easy handling
- Unique on the market for its extremely compact size, with integrated isolation transformer and batteries
- Up to 6 units can be placed in parallel: scalability in power or High Availability using redundancy
- IGBT rectifier able to reduce harmonic distortion to a value of less than 3%
- Intelligent: embedded LAN connection for improved UPS supervision
- Advanced graphics display for total system control
- Redundant batteries: the battery packs are connected to each other in two distinct strings. If one battery in a string is not functioning, it does not compromise the back-up time provided by all the batteries belonging to the other string
- Expert Battery System
- Always-On Mode
- Global Supply System
- Energy Saver
- Backfeed protection (internal or external)
- Separate back-up mains
- Internal manual by-pass
- Advanced Dry Contact (ADC)

INTERNAL ARCHITECTURE



MASTE 019 A

ADVANCED DRY CONTACT INTERFACE (ADC)

ADC interface consists of 3 dry contacts in input and 4 in output (250V) is available to implement remote commands and signals. Up to 2 additional boards can be mounted in the same UPS.



MASTE 013A

GSS INTERFACE

This provides 4 dry contacts in input and 1 in output (60V), all programmable to manage specific control and activation procedures. Designed for activation of the Global Supply System procedure.



MASTE 012A

LCD REMOTE COMMUNICATION PANEL

The remote mimic panel is a monitoring graphical device that can be used to monitor the UPS and display its main operating functions. Communication with the user can take place in various languages, including Russian and Chinese.



It is possible to:

- display the system's operating status
- check the status of the UPS by means of the LEDs
- log all events on file.

INPUT/OUTPUT ISOLATION TRANSFORMER

Allows the electrical safety operating level to be increased (failure on the line) in some environments or permits the neutral arrangements to be changed.

EXTERNAL MANUAL BY-PASS

Available on the whole range for any system requirements, this allows on-site maintenance of the UPS without interrupting the power supply to the load.

RACK KIT

Used for the convenient installation of UPSs from the **BC** and **MC** series up to 30 kVA in 19" rack cabinets.

POWER SHARE

Pre set connections for the protection of non-critical loads that can be disconnected when certain conditions occur (for example to extend the back-up time to critical loads during battery-powered operation).

PARALLEL KIT

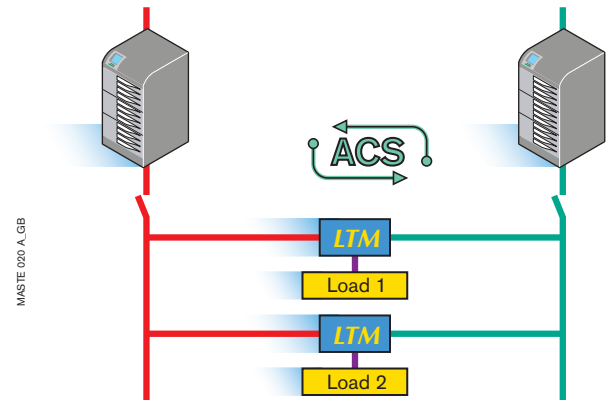
Allows optimal interaction between UPSs connected in parallel in order to guarantee load sharing.

ADDITIONAL BATTERY CHARGER

If external battery cabinets are used, this doubles the recharge current normally available, for better and faster recharging of the batteries.

ACS : AUTOMATIC CROSS SYNCHRONIZATION

The ACS function guarantees perfect synchronization with a second independent power source (UPS, Generator, etc.) in applications with Load Transfer Module.



ISOLATION CONTROLLER

If the transformer is present, this device constantly controls the isolation between the power supply to consumers and the ground.



MASTE 011 A

WHY PROFESSIONAL UPS MANAGEMENT SOFTWARE?

SOCOMEK SICON UPSs are designed to guarantee the maximum electrical protection against any disturbance coming from the mains power supply.

The safety of the IT infrastructure is however ensured by the integration of both hardware and software solutions. Only together can they provide overall protection for critical applications.

SOCOMEK SICON UPS thus proposes high availability solutions in which active and integrated management of the UPS plays an essential role by simplifying supervision and control and optimising performance.

The scope of communication solutions provided by SOCOMEK SICON UPS offer users the opportunity to combine their own management of LAN local networks with support and diagnostics management in real time via Internet, with no need for costly dedicated channels.

LAN CONNECTION

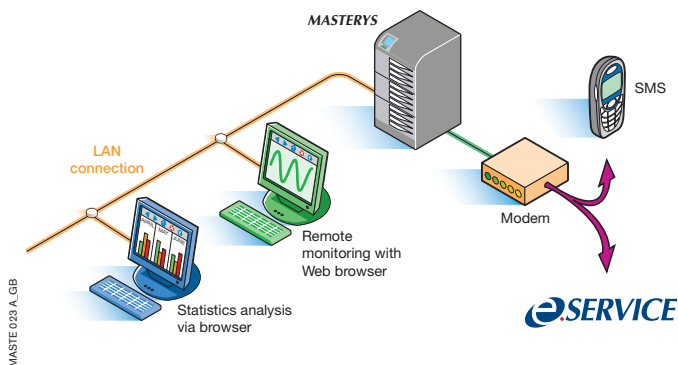
> Embedded feature highly innovative and unique on the market, supplied as standard in the *MC*, *EB* and *IP* models

These UPSs adopt as standard a network connection for remote control of the UPS.

The main functions are as follows:

- 10Mb Ethernet connection (RJ45)
- graphic UPS supervision via Web browser
- operational statistics
- notification of faults via e-mail and SMS (GSM)
- diagnostics via modem and *e-SERVICE*

The services offered allow the simplified integration of the UPS as a network peripheral, with total control in the hands of an administrator.



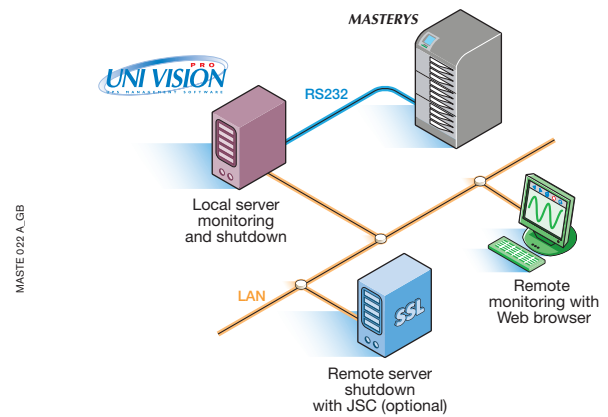
UNI VISION PRO

> The solution for management of a UPS connected to a local server via RS232

The main functions are as follows:

- graphic UPS supervision via Web browser
- local shutdown of the server connected via serial line
- optional remote shutdown by proxy agent and Java shutdown client
- notification of faults via e-mail - up to 8 addresses

This is normally adopted in networks of average size and complexity at departmental level.



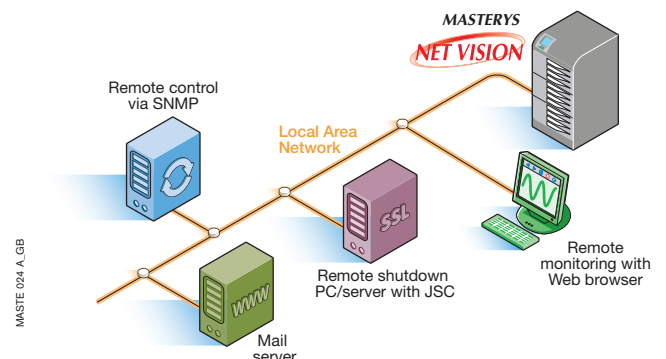
NET VISION

> The solution for management of a UPS connected directly to the LAN

The main functions are as follows:

- 10/100Mb Ethernet connection (RJ45)
- graphic UPS supervision via Web browser
- remote shutdown of up to 40 computers
- notification of faults via e-mail - up to 8 addresses
- UPS management by SNMP protocol
- diagnostics via modem and *e-SERVICE*

This is normally adopted in networks of medium-large size and complexity in which the IT manager manages all network resources in a centralised way.



SERVICE AND MAINTENANCE

> Round-the-clock security for your power supply

Given the UPS's vital importance, offering service quality is just as important as product quality.

CIM (Consultancy, Inspection, Maintenance) is a worldwide network of hundreds SOCOMEC SICON UPS engineers specialising in UPS maintenance.

This team is at the customer's disposal for:

- installing UPS equipment
- preventive maintenance
- corrective maintenance
- a 24-hour diagnostic service
- remote technical assistance
- consultancy, design and implementation of installation modifications and updating

PROXIMITY

> For faster support



The **CIM** team is present strategically in Europe and all over the world, so that no customer need ever feel isolated.

This guarantees the customer:

- rapid action
- effective action, with a stock of original spare parts always on hand
- UPS specialists at the client's disposal.

e-SERVICE

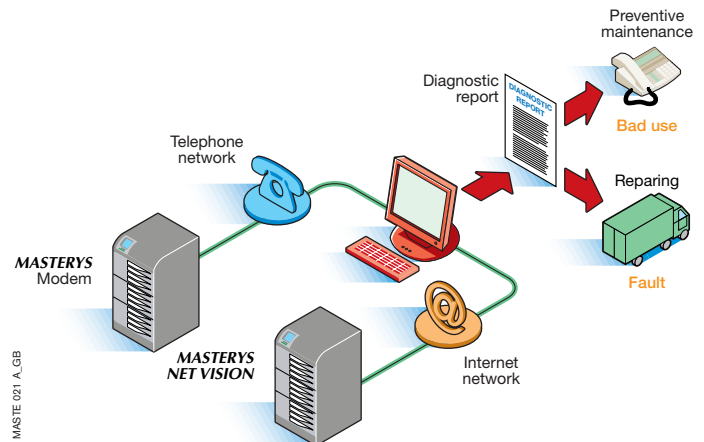
> Permanent contact between **MASTERYs** and the SOCOMEC SICON UPS maintenance service

e-SERVICE is a SOCOMEC SICON UPS service that ensures effective prevention and constant monitoring of your **MASTERYs**. Connection to the **e-SERVICE** centre, unique of its kind, is established either through the phone line and modem or through the Internet if **NET VISION** is installed.

e-SERVICE:

- monitors the parameters needed for correct operation
- informs on operating status of the **MASTERYs** in periodic reports sent by customized e-mail or SMS
- detects any anomalies in the same way. Knowing status of the **MASTERYs** from a distance helps establish a sure and complete diagnosis for a rapid and effective response

SOCOMEc SICON UPS's **e-SERVICE** provides monitoring on a 24/7 basis, every day of the year, granting the customer complete peace of mind.



MASTE 021_A_GB

THE ADVANTAGES OF REMOTE MONITORING

> Customized services for guaranteed service continuity

- Peace of mind: round the clock monitoring of the **MASTERYs**.
- Access to the status of your installation: reports inform the user about the parameters and modifications with comments from our specialists.
- Fast, effective action: if a problem arises, **MASTERYs** alerts the **e-SERVICE** station for immediate action.
- Technical assistance via telephone for the following operations: UPS shutdown, load transfers, switching-off, etc.
- Advice from specialists: to adapt your high quality energy installation to site evolutions.
- Manufacturer know-how: the experience of specialists, who monitor your **MASTERYs** system with the required know-how.

MODELS	BC			MC						EB				IP			
kVA	8	10	12	15	20	30	40	60	80	2 x 15	3 x 15	2 x 30	3 x 30	15	20	30	
kW	5.6	7	8.4	12	16	24	32	48	64	2 x 12	3 x 12	2 x 24	3 x 24	12	16	24	
Input/output: 1/1	● ⁽¹⁾	● ⁽¹⁾															
Input/output: 3/1	● ⁽¹⁾	● ⁽¹⁾	●	●	●									●	●		
Input/output: 3/3		●	●	●	●	●	●	●	●	●	●	●	●	●	●	●	
Parallel configuration	up to 2 units			up to 6 units						up to 3 modules		up to 3 modules		up to 6 units			
INPUT																	
Nominal input voltage	if single-phase 230 ± 20% (up to -35% @ 70% nominal load) ; if three-phase 400 ± 20% (up to -35% @ 70% nominal load)																
Input frequency	50 / 60 Hz ± 10%																
Power factor / THDI ⁽²⁾	>0.99 / <6% ⁽³⁾						>0.99 / <3%										
OUTPUT																	
Output voltage	if single-phase 230 ± 1% (220/240 V settable) ; if three-phase 400 ± 1% (380/415 V settable)																
Output frequency	50 / 60 Hz ± 2% (settable from 1% to 8% if Gen Set present)																
Automatic bypass	Output nominal voltage ± 15% (settable from 10% to 20% if Gen Set present)																
Overload (mains mode)	125% for 2 minutes 150% for 10 seconds						125% for 10 minutes 150% for 60 seconds										
Crest factor	3:1 (complying with IEC 62040-3)																
EFFICIENCY																	
Efficiency AC/AC (Online)	up to 92%						up to 92%						up to 91%				
Efficiency in ECO-MODE	up to 98%						up to 98%						up to 97%				
Efficiency in ALWAYS-ON mode	-						up to 96%						up to 95%				
STANDARDS																	
Safety	(EN) IEC 62040-1-1, (EN) IEC 60950-1																
Performance & topology	(EN) IEC 62040-3 [VFI-SS-111]																
EMC standard	(EN) IEC 62040-2 (2 nd edition) EN 50091-2																
Product certification	CE																
Degree of protection	IP 21 (complying with IEC 60529)																
ENVIRONMENTAL DATA																	
Operating temperature	0 + 40°C (for best battery life from 15°C to 25°C)																
Storage temperature range	-5 + 45°C																
Relative humidity	0-95% non-condensing																
Maximum altitude (above sea level)	1000mt (3.300ft) without derating (maximum 3.000 m – 10.000ft)																
Acoustic noise (ISO 3746)	< 50 dB			< 55 dB			< 62 dB			< 55 dB				< 55 dB			
WEIGHT																	
Weight (with standard batteries)	155	160	175	195	240	315	415	200 ⁽⁴⁾	210 ⁽⁴⁾	410	260 ⁽⁴⁾	440	300 ⁽⁴⁾	310	350	400	
DIMENSIONS (WXDXH) AND BACK - UP TIMES																	
Cabinet type S (Short) (444 x 795 x 800 mm)	16'	12'	12'	11'													
	25'	20'	16'														
Cabinet type M (Medium) (444 x 795 x 1000 mm)	45'	30'	25'	16'	10'	10'											
	60'	45'	35'	25'	18'	10'											
Cabinet type T (Tall) (444 x 795 x 1400 mm)	95'	65'	55'	45'	30'	18'	10'	UPS only	UPS only					11'	6'	4'	
				65'	45'	28'											
Cabinet type W (Wide) (600 x 795 x 1400 mm)	-	-	-	up to 210' ⁽⁵⁾	up to 135' ⁽⁵⁾	up to 85' ⁽⁵⁾	up to 60' ⁽⁵⁾	12' ⁽⁵⁾	8' ⁽⁵⁾	11'	11' ⁽⁶⁾	4'	4' ⁽⁶⁾	up to 210' ⁽⁵⁾	up to 135' ⁽⁵⁾	up to 85' ⁽⁵⁾	
								up to 45' ⁽⁵⁾	up to 35' ⁽⁵⁾	up to 65' ⁽⁶⁾	up to 65' ⁽⁶⁾	up to 28' ⁽⁶⁾	up to 28' ⁽⁶⁾				

■ standard product configuration - BUT @ 75% of the load

⁽¹⁾ combi: accepts both single and three-phase input - ⁽²⁾ for source voltage THD < 2% and nominal load - ⁽³⁾ 1/1 configuration

⁽⁴⁾ batteries are in an external cabinet - ⁽⁵⁾ cabinets W for battery extension only - ⁽⁶⁾ different cabinets type W are necessary: 1 for the UPS and the rest for the batteries.

MODELS	BC			MC						EB				IP		
kVA	8	10	12	15	20	30	40	60	80	2 x 15	3 x 15	2 x 30	3 x 30	15	20	30
kW	5.6	7	8.4	12	16	24	32	48	64	2 x 12	3 x 12	2 x 24	3 x 24	12	16	24
STANDARD ITEMS / ACCESSORIES																
RS 232/485 serial interface	■	■	■	■	■	■	■	■	■	■	■	■	■	■	■	■
Additional RS 232	-	-	-	■*	■*	■	■	■	■	■	■	■	■	■	■	■
2 Slots for communication boards	■	■	■	■	■	■	■	■	■	■	■	■	■	■	■	■
Integrated LAN	-	-	-	■*	■*	■	■	■	■	■	■	■	■	■	■	■
ADC interface	□	□	□	□*	□*	□	□	□	□	□	□	□	□	□	□	□
GSS interface	-	-	-	□*	□*	□	□	□	□	□	□	□	□	□	□	□
LCD remote communication panel	□	□	□	□	□	□	□	□	□	□	□	□	□	□	□	□
Galvanic isolation transformer	□	□	□	□	□	□	□	□	□	□	□	□	□	■	■	■
External manual by-pass	□	□	□	□	□	□	□	□	□	□	□	□	□	-	-	-
Kit rack 19"	□	□	□	□	□	□	-	-	-	-	-	-	-	-	-	-
Power Share	□	□	□	□	□	□	□	□	□	□	□	□	□	□	□	□
Parallel Kit	□	□	□	□	□	□	□	□	□	-	-	-	-	□	□	□
Additional battery charger	-	-	-	□	□	□	□	□	□	□	□	□	□	□	□	□
Isolation controller	-	-	-	-	-	-	-	-	-	-	-	-	-	□	□	□
ACS: automatic cross synchronization	-	-	-	□*	□*	□	□	□	□	□	□	□	□	□	□	□

*3/3 version only

■: standard □: optional

SOCOMEC, an independent manufacturer

The SOCOMEC Group employs 1700 people and has a turnover in excess of € 190 million.

Its core activities are the manufacture of electrical products and electronic equipment.

The company has full industrial control in both of its specialist divisions, guaranteed by ISO 9001:2000 certification.



3 factories in France, 2 factories in Italy

SOCOMEC SICON UPS: know-how

Located in France and in Italy, SOCOMEC SICON UPS extends way beyond European borders.

The company has based its strategy on two main policies:

- **total quality** of its products and services
- **adaptability** to specific customer needs



SOCOMEC SICON UPS offers a complete range of solutions suited to various IT, industrial and telecommunications configurations:

- **UPS** from 300 VA to 4800 kVA
- **rectifier-chargers** from 7.5 to 6000 A
- **DC/AC converters** from 7.5 to 18 kVA
- **static transfer switch** from 16 to 4800 A
- **harmonic compensators**
- **400Hz frequency converters**

SOCOMEC also manufactures:

A range of Switching and Protection Systems.

Future growth of the Group will also be fuelled by a second industrial activity independent of its UPS systems, i.e. low voltage industrial switches and protection systems.

This Division designs and manufactures the widest range of:

- load break switches
- changeover switches
- fuse protection
- energy and control management
- safety enclosures...

More secure. How?

We have designed a modular NO SINGLE POINT OF FAILURE system that ensures absolute availability thanks to the full redundancy of all components.

We have also introduced multiprocessor architecture, to ensure greater power, reliability and calculation speed.

A powerful DSP processor controls the power boards, a second processor is dedicated to control of the operation logic, while a third oversees the communication processes (advanced graphics display, remote display, LAN).

The fact that these components are independent guarantees continuous monitoring of operation of the UPS system.

Technology to protect your business.

More economical. How?

The fully sinusoidal absorption guaranteed by the IGBT rectifier reduces the rate of harmonic distortion in respect of the mains to a value <3%, during UPS-powered operation.

And now, even when operating off the stand-by mains power, the harmonic reduction can be achieved with the innovative **ALWAYS-ON MODE**.

Both modes grant a significant reduction in energy costs on all models in the range, up to 90 kVA.

Saving is the first step towards earning.

More versatile. How?

The versatility of the **MASTERYs** range is undoubtedly one of its key features, with a complete range rated from 8 to 90 kVA.

The right solution can be found in the wide choice of configurations that are compatible with all neutral arrangements (IT, TT, TN), with single-phase and three-phase input/output, for distributed, centralised, modular, scalable and redundant power supplies.

A superior solution whatever the requirement.

More intelligent. How?

What could be better than a system capable of communicating with you?

Another first.. We have equipped **MASTERYs** with an integrated LAN connection that facilitates and improves use of the UPS, enhancing interaction with users and extending the amount of information transmitted.

MASTERYs can also send diagnostic reports and alarms autonomously via SMS and e-mail, guaranteeing in real time the high standard of service that has always been typical of SOCOMEC SICON UPS*.

Designed to express itself better.

*source: 2004 Frost & Sullivan Award for Customer Service Excellence

Socomec Sicon UPS worldwide:

IN EUROPE

BELGIUM

Schaatsstraat, 30 rue du Patinage
B - 1190 Bruxelles
Tel. +32 (0)2 340 02 34 - Fax +32 (0)2 346 16 69
ups.sales@socomec.com

FRANCE

95, rue Pierre Grange
F - 94132 Fontenay-sous-Bois Cedex
Tel. +33 (0)1 45 14 63 90 - Fax +33 (0)1 48 77 31 12
ups.paris.dcm@socomec.com

GERMANY

Heppenheimerstraße 57
D - 68309 Mannheim
Tel. +49 (0) 621 7168 40 - Fax +49 (0) 621 7168 444
info@sicon-socomec.de

ITALY

Viale Tolstoi, 73 - Zivido
20098 San Giuliano Milanese (MI)
Tel. +39 02 98 242 942 - Fax +39 02 98 240 723
siconmi@socomec.com

NETHERLANDS

Bergveste 2F
NL - 3992De Houten
Tel. +31 (0)30 63 71 504 - Fax +31 (0)30 63 72 166
info@socomec.nl

SLOVENIA

Savlje 89
SI - 1000 Ljubljana
Tel. +386 1 5807 860 - Fax +386 1 5611 173
info@socomec-sicon-ups.si

SPAIN

C/Nord, 22 Pol. Ind. Buvisa
E - 08329 Teià (Barcelona)
Tel. +34 93540 7575 - Fax +34 93540 7576
info@socomec-aron.com

UNITED KINGDOM

Units 401/402
Cirencester Business Park
Love Lane
Cirencester
Gloucestershire
GL7 1YG
Tel. +44 1285 644 444 - Fax +44 1285 644 414
ups.uk.sales@socomec.com

HEAD OFFICE

SOCOME GROUP SWITCHING PROTECTION AND UPS

S.A. capital 10 923 800 € - R.C. Strasbourg 548500 149 B

SOCOME SICON UPS Strasbourg

11, route de Strasbourg - B.P. 50 - F-67230 Huttenheim - FRANCE
Tel. +33 (0)3 88 57 45 45 - Fax +33 (0)3 88 74 07 90
ups.benfeld.admin@socomec.com

SOCOME SICON UPS Vicenza

Via della Tecnica, 1 - I - 36030 Villaverla - ITALIE
Tel. +39 0445 359 111 - Fax +39 0445 359 222
info.it.ups@socomec.com

www.socomec-sicon.com

IN ASIA

INDIA

Atma Ram Mansion
1/21 Asaf Ali Road
IN - New Dehli - 110 002
Tel. +91 11 23234411 - Fax +91 1123232639
hpl@hplindia.com

SINGAPORE

25 Tagore Lane, # 01-02
Singapore Godown
SG - 787 602 Singapore
Tel. +65 6 554-0900 - Fax +65 6 458-7377
general@socomecsicon.com.sg

THAILAND

17/178 Prachachuen Road
Tungsonghong, Laksi
TH - 10210 Bangkok
Tel. +66 2 503 92 43 - Fax +66 2 503 99 23
inquiry@socomec-unitrio.co.th

SALES AND MARKETING MANAGEMENT

SOCOME SICON UPS Paris

95, rue Pierre Grange
F-94132 Fontenay-sous-Bois Cedex - FRANCE
Tel. +33 (0)1 45 14 63 90
Fax +33 (0)1 48 77 31 12
ups.paris.dcm@socomec.com

